

2024 STATE OF THE COUNTY

Presented by the Carbon Chamber & Economic Development Corporation

Transportation & Infrastructure

SCOTT VOTTERRO

**ASSISTANT DISTRICT EXECUTIVE FOR DESIGN
PENNDOT**

 **CARBON CHAMBER**
& Economic Development

 **The Chamber**
GREATER LEHIGH VALLEY CHAMBER OF COMMERCE

PENNDOT DISTRICT 5 - CARBON



Christopher J. Kufro, PE District Executive

Scott Vottero, PE
Assistant District
Executive (Design)

Michael Guidon, PE
Assistant
District Executive
(Construction)

Bruce Bubser
Assistant
District Executive
(Maintenance)

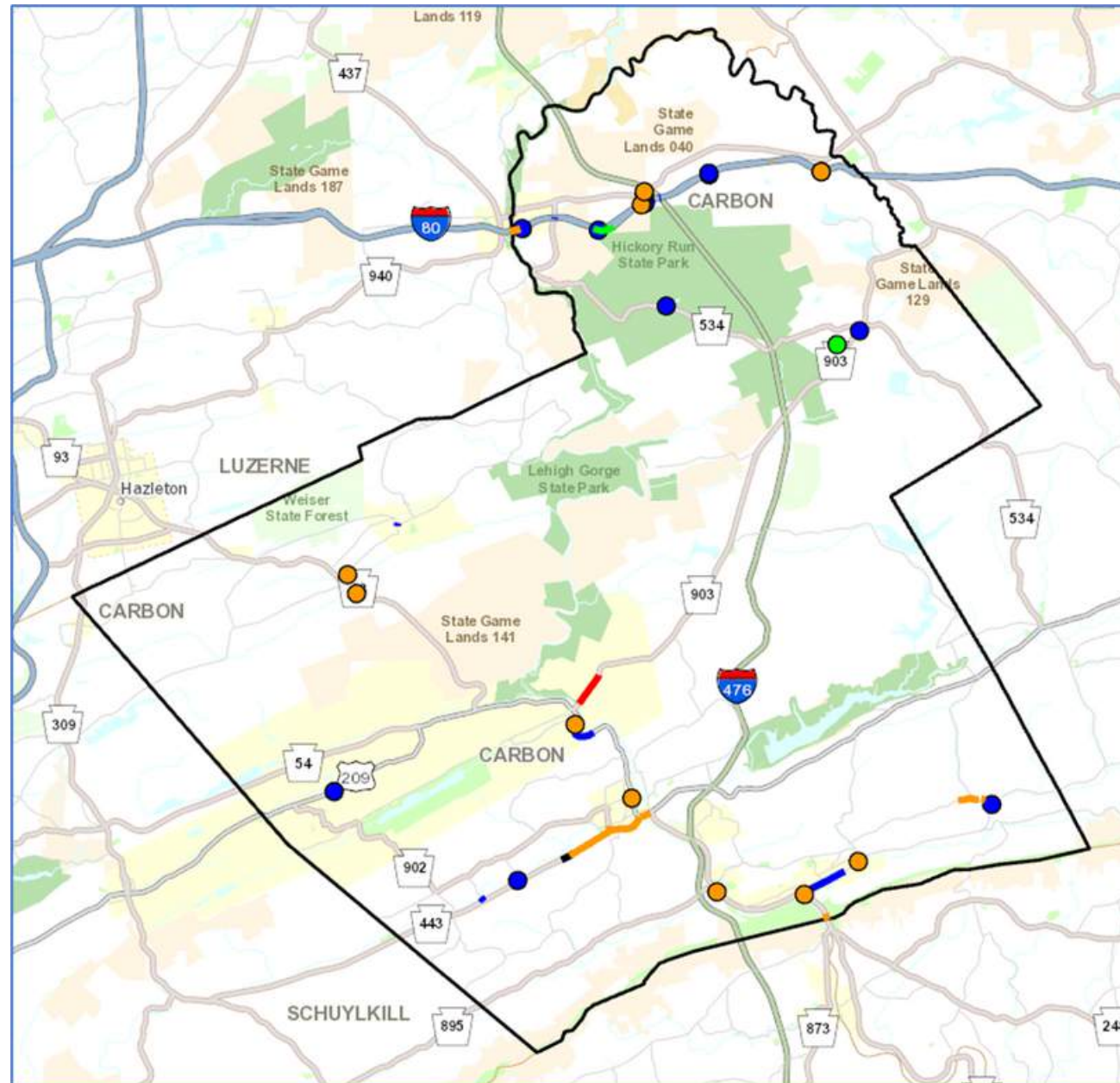


DISTRICT 5-0 STATISTICS

- 3,290 miles of highway (2,445 miles on high level network)
 - 65% of network is high level
 - 8,389 total snow lane miles
- 2,147 bridges (9,458,682 SF of deck area)
 - 239 state bridges that are SD (11.1%)
 - 53 state bridges that are posted (2.5%)
 - 9 state bridges that are closed (0.4%)
- Local Bridges
 - 803 locally-owned bridges
 - 213 local bridges that are SD (26.7%)
 - 144 local bridges that are posted (18.9%)
- 21 local bridges that are closed (2.3%)



CARBON COUNTY WORK



443 ROADWAY IMPROVEMENTS





PA 443 - Lehighnton



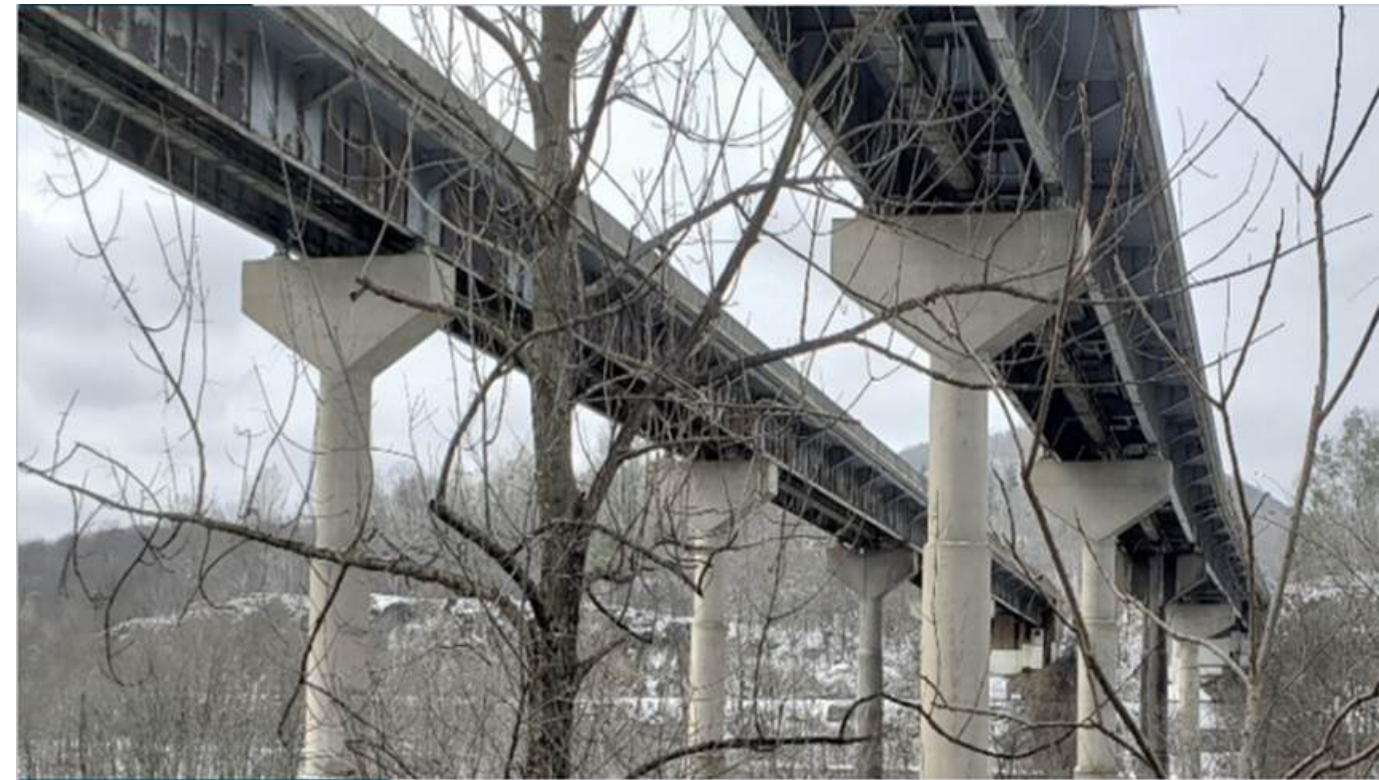
PA 443 - Lehigh

I-80 LEHIGH RIVER BRIDGE



I-80 LEHIGH RIVER BRIDGE

- **General Sequence of Construction – Approx. 4 years beginning Spring 2024**
 - **New I-80 EB structure & culvert extension to the south of existing on a new alignment**
 - **Place I-80 EB traffic onto the new structure**
 - **Crossover I-80 WB traffic onto old I-80 EB**
 - **Demo and replacement of I-80 WB Structure on the current alignment**
 - **Restore I-80 WB traffic pattern**
 - **Demo old I-80 EB Structure**
 - **With anticipated Project completion in June 2028**
 - **Resurfacing project programmed for SR 940 in 2029.**





209-13B SUPERSTRUCTURE REPLACEMENT



248 CANTILEVER



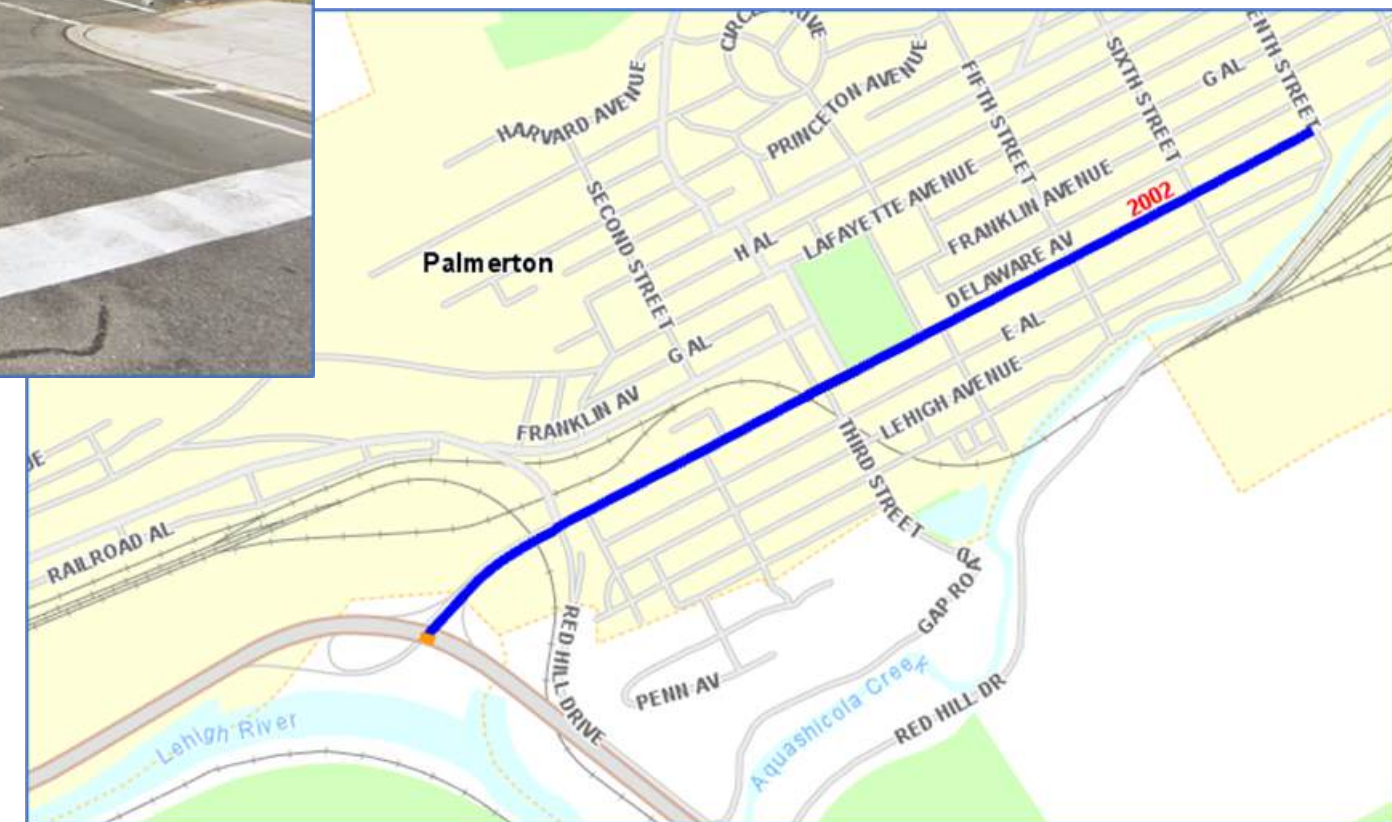
JIM THORPE WALL



WEATHERLY RETAINING WALL



DELAWARE AVE SIGNALS



CARBON COUNTY MAINTENANCE

1. Cold in place recycling project on SR 1001 (Penn Forest Road/Hatchery Road) 8 miles improved (section from Turnpike to 903 will be done in 2 years due to Turnpike bridge construction)
2. Cold in place recycling project on SR 2011 (Pohopoco Drive) $\frac{3}{4}$ miles improved
3. Resurfacing of SR 309 $\frac{1}{2}$ mile improved Department Force
4. Resurfacing of SR 209 3 miles improved (currently ongoing) Department Force
5. Resurfacing of SR 2001 (Forest Inn Road) $2\frac{1}{2}$ miles improved Department Force
6. Seal Coat on all SR 940. 7,000 tons of base repair on SR's 209, 2001, 2004 in Towamensing and Lower Towamensing townships.



COLD-IN PLACE RECYCLING IN CARBON COUNTY





SR 1001 Hatchery/Penn Forest Road



SR 2001 Forest Inn Road



SR 2001 Forest Inn Road



SR 209 Towamensing township – Leveling before final course

2025 OUTLOOK

Cold-in-Place

- SR 3006 - Hemlock Drive/Packerton Dam Road (5 miles)
- SR 3012 - Mahoning Drive West - from Schuylkill County to SR 902 (2 miles)

PennDOT Maintenance

- SR 209 in Nesquehoning Borough - Milling and paving travel lanes
- SR 93 in Beaver Meadows - Milling and paving in travel lanes

